

# SUPPORTING YOUR CHILD'S ECG JOURNEY

Meet the Parents Session (Sec 4 Express)

31 March 2026 @ Gan Eng Seng School

Presented by Christina Ho | ECG Counsellor



# OUTLINE

1. Overview of Post-Sec Pathways & Admission Criteria
2. Aptitude-Based Admissions (DSA-JC/ Poly EAE)
3. Supporting Your Child's ECG Journey



# CHECK-IN

HOW FAMILIAR ARE YOU WITH THE POST-SEC OPTIONS OPEN TO YOUR CHILD?

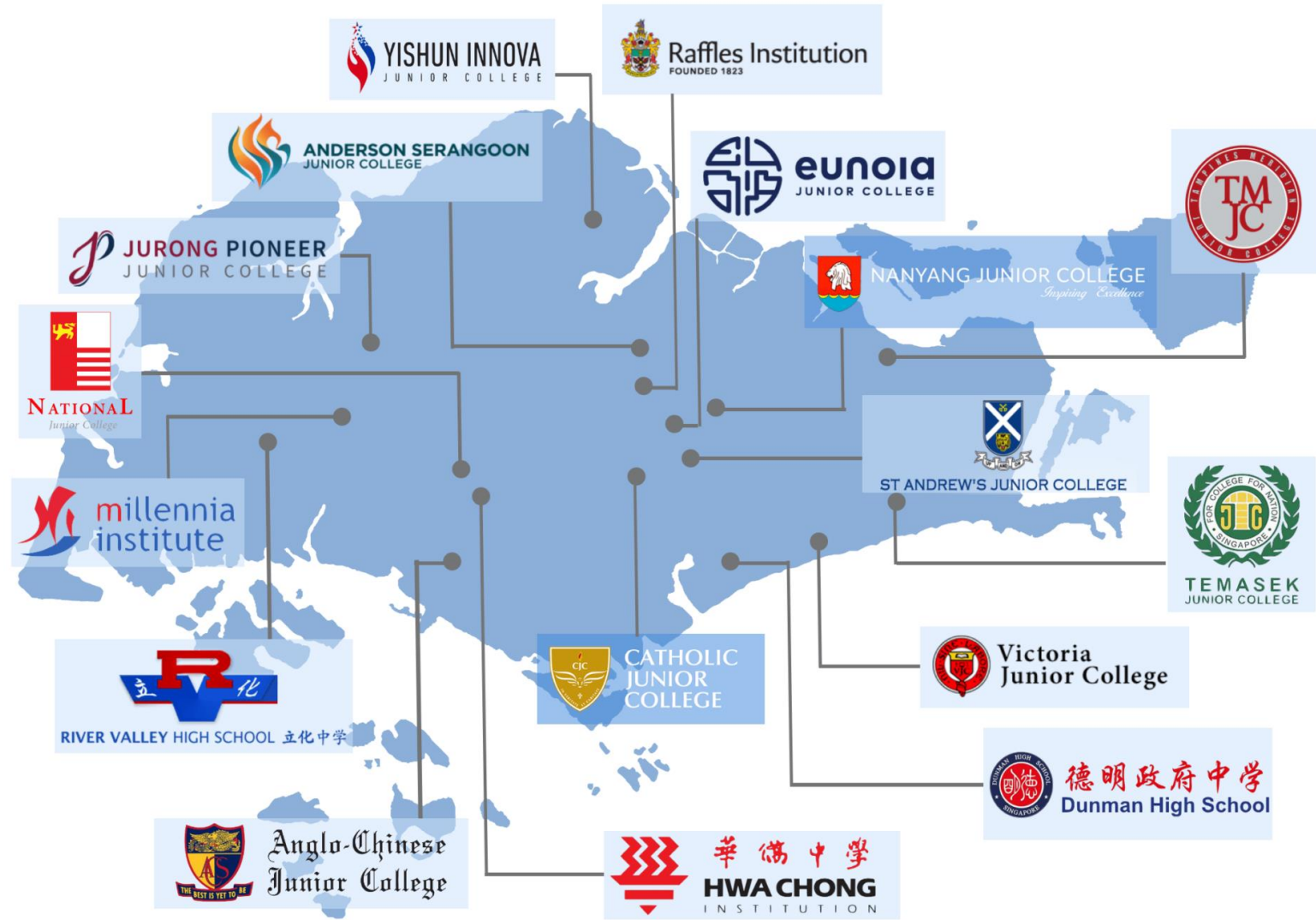
Join at [mentimeter.com](https://mentimeter.com)  
Code: 3613 9470

1. Confident – I am familiar with the different options and my child is clear where to go
2. Informed – I know about the different options but am not sure how to guide my child
3. Unsure – I find the options a little overwhelming and need more information



# AT A GLANCE

	JC / MI	Polytechnic	ITE	Arts Institution
Where?	16 JCs 2 IB schools MI	5 polytechnics (SP, NP, TP, NYP, RP)	3 ITE Colleges (CC, CE, CW)	NAFA LASALLE
Duration	JC/IB: 2 years MI: 3 years	3 years	2 years (O-level) 3 years (N-level)	3 years
Qualification	A-level certificate/ IB diploma	Poly diploma	Higher NITEC certificate	Arts diploma
Eligibility Criteria	LIR5 $\leq$ 20 LIR4 $\leq$ 20	Net ELR2B2 $\leq$ 26* (*Nursing: 28)	Best 4 subjects ( <i>and meet course Min Entry Requirements</i> )	Pass in EL Net aggregate of 4 'O' subjects $\leq$ 25 ( <i>excluding EL*</i> )



## IB Schools



Anglo-Chinese School  
(Independent)  
A Methodist Institution  
(Founded 1886)



St. Joseph's Institution  
Looking Forward Since 1852

# JUNIOR COLLEGES / MILLENNIA INSTITUTE

1

L1R5 (JC) or L1R4 (MI) better than 20

## L1R5 JC – 2 years

L1	English or Higher MTL
R1	Any 1 best-scoring subject from Humanities
R2	Any 1 best-scoring subject from Mathematics or Science
R3	Any 1 best-scoring subject from Humanities, Mathematics or Science
R4, R5	Any 2 best-scoring subjects except Religious Knowledge

## L1R4 MI – 3 years

L1	English or Higher MTL
R1,R2	Any 2 best-scoring subject from Humanities, Mathematics or Science
R3, R4	Any 2 best-scoring subjects except Religious Knowledge

There are some subjects at 'A' level where students will have to meet the stipulated requirements taken at 'O' Level.  
*The requirements differ for each JC so please check the respective institutions' website for details.*

# JUNIOR COLLEGES / MILLENNIA INSTITUTE

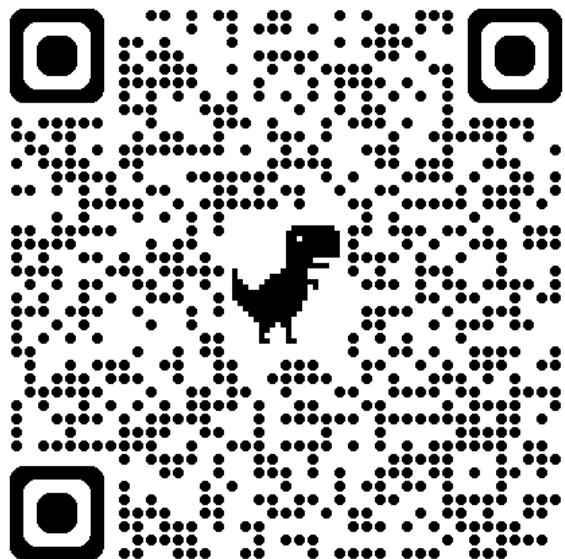
2

## Specific Subject Entry Requirements

Subject	Grade Requirement
English	A1 to C6
Any 1 Mathematics <ul style="list-style-type: none"><li>• Additional Mathematics</li><li>• Mathematics</li></ul>	A1 to D7
Any 1 Mother Tongue Language (MTL) <ul style="list-style-type: none"><li>• <b>MTL:</b> Chinese, Malay, Tamil</li><li>• <b>MTL approved by MOE in lieu of an official MTL (MTL-in-lieu):</b> Arabic, Bengali, Burmese, French, German, Gujarati, Hindi, Japanese, Punjabi, Thai, Urdu</li></ul>	<ul style="list-style-type: none"><li>• <b>MTL or MTL-in-lieu:</b> A1 to D7</li><li>• <b>Higher MTL:</b> A1 to E8</li><li>• <b>'B' Syllabus:</b> Merit or Pass</li></ul> <p>Note: There is no Higher level or 'B' Syllabus for MTL-in-lieu.</p>

# 2025 NET L1R5 RANGE

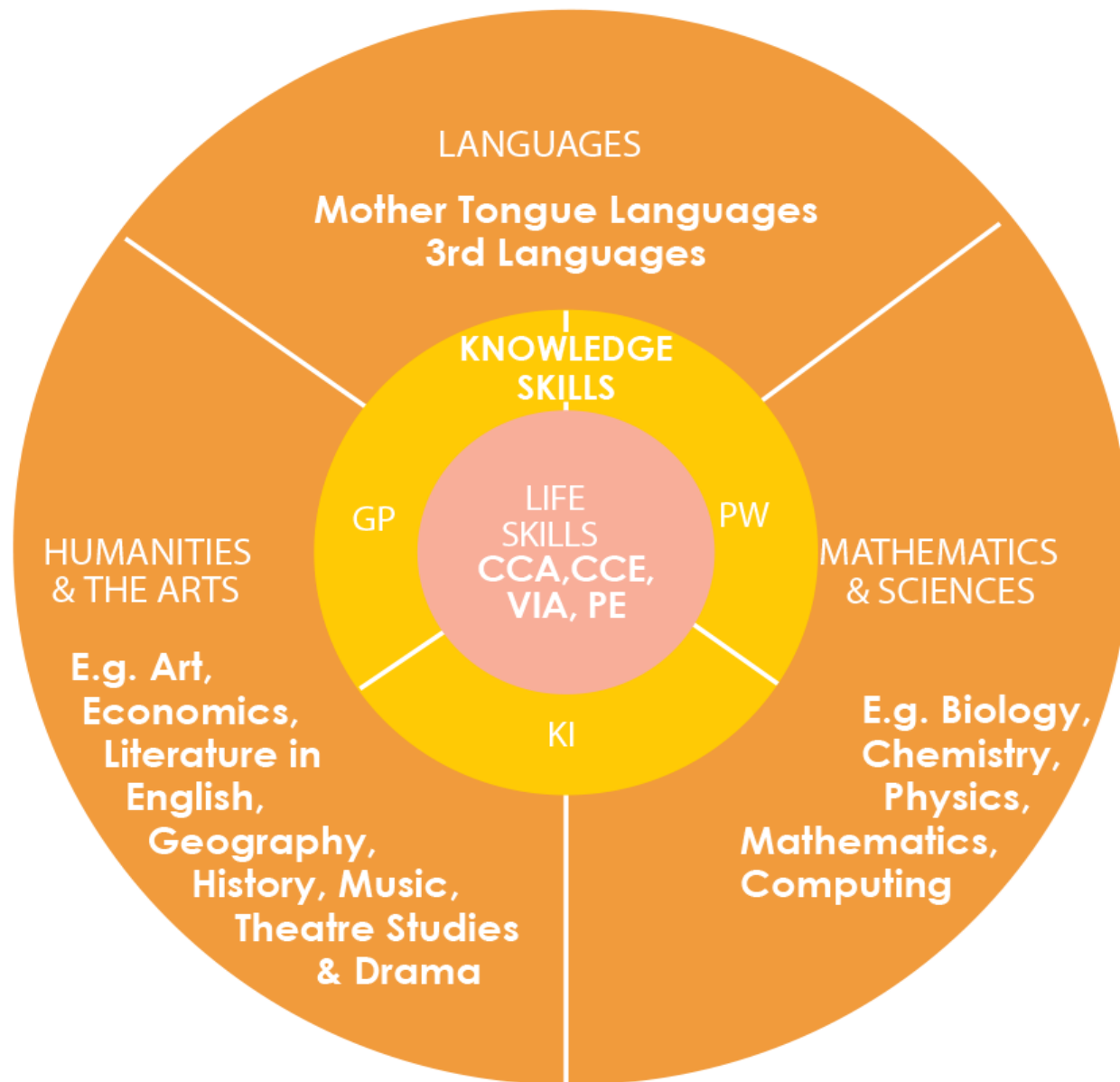
(minus CCA bonus points)



2026 JAE Course Booklet

JC Name	A-Level				International Baccalaureate	
	Arts		Science		Course Code	L1R5 net Aggregate Range for Previous (2025) JAE
	Course Code	L1R5 Net Aggregate Range for Previous (2025) JAE	Course Code	Net L1R5 Range for Previous (2025) JAE		
Anderson Serangoon Junior College	39A	7 to 11	39S	5 to 10	-	-
Anglo-Chinese Junior College	22A	3 to 9	22S	2 to 8	-	-
Anglo-Chinese School (Independent)	-	-	-	-	51I	2 to 5
Catholic Junior College	23A	7 to 13	23S	5 to 12	-	-
Dunman High School	44A	3 to 8	44S	4 to 7	-	-
Eunoia Junior College	38A	2 to 6	38S	2 to 5	-	-
Hwa Chong Institution	24A	2 to 5	24S	2 to 4	-	-
Jurong Pioneer Junior College	40A	10 to 15	40S	6 to 14	-	-
Nanyang Junior College	26A	2 to 7	26S	2 to 5	-	-
National Junior College	27A	5 to 8	27S	3 to 7	-	-
Raffles Institution	28A	2 to 5	28S	2 to 3	-	-
River Valley High School	45A	7 to 9	45S	4 to 8	-	-
St. Andrew's Junior College	30A	6 to 10	30S	4 to 9	-	-
St. Joseph's Institution	-	-	-	-	52I	2 to 6
Tampines Meridian Junior College	41A	9 to 13	41S	6 to 12	-	-
Temasek Junior College	32A	6 to 8	32S	2 to 7	-	-
Victoria Junior College	33A	3 to 8	33S	2 to 6	-	-
Yishun Innova Junior College	42A	5 to 19	42S	7 to 18	-	-

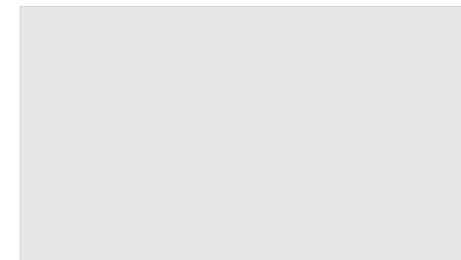
Source: [2026 JAE Course Booklet](#)



3 H2 subjects  
1 H1/H2 subject

At least one H1 or H2 subject is from a **contrasting** discipline

- + General Paper (H1)
- + Mother Tongue (H1)
- + Project Work (Pass/Fail)



# IB SCHOOLS

Same requirements as JC admission

## IB STRUCTURE



1

L1R5 (JC) better than 20

2

Specific Subject Entry Requirements

3 subjects at Higher Level  
3 subjects at Standard Level  
[OR 4H/2S]

+ Creativity, Action, Service  
+ Theory of Knowledge  
+ Extended Essay

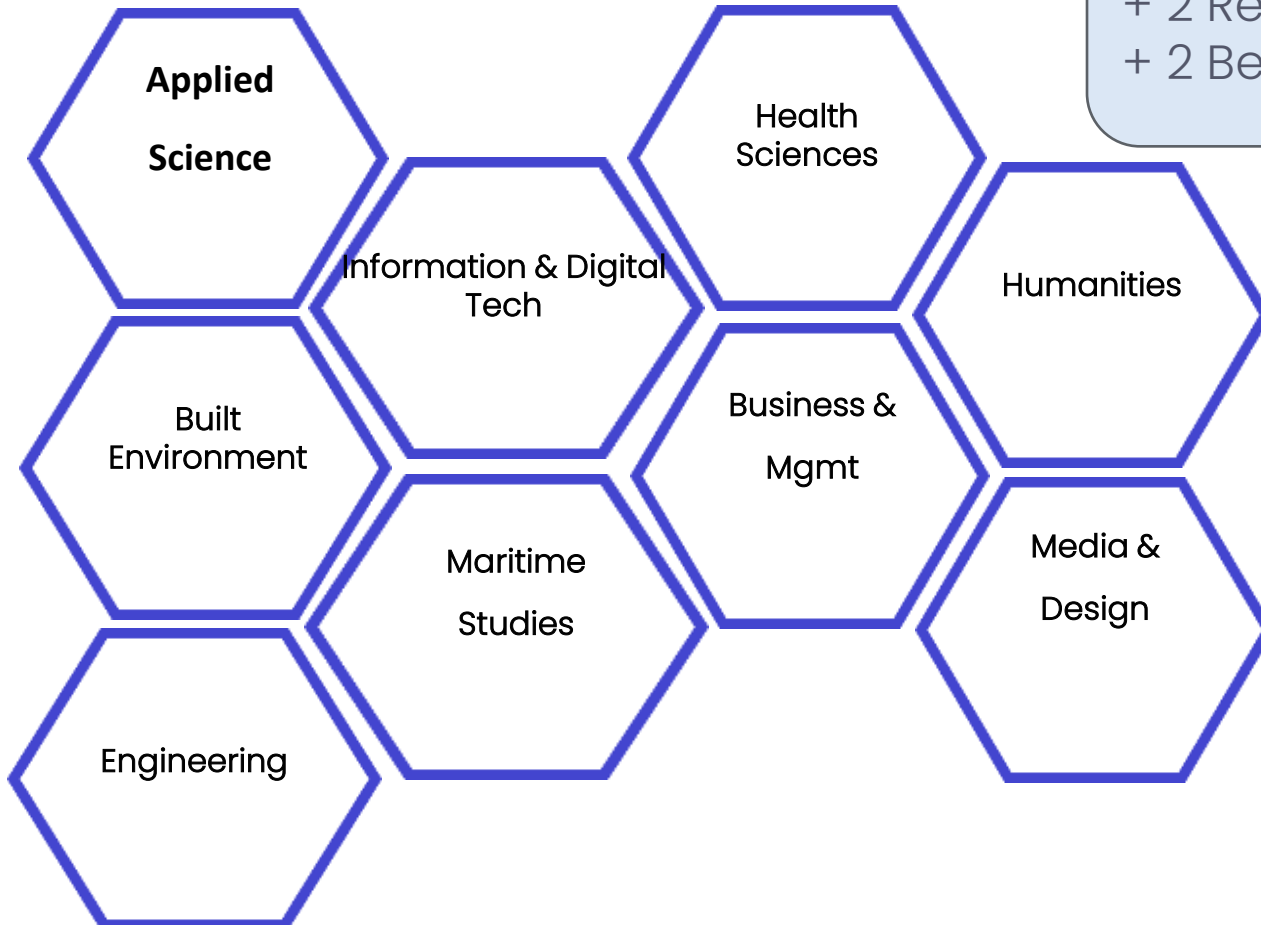
# POLYTECHNICS

1

ELR2B2A/B/C/D = 26 or better  
(28 for Nursing)

ELR2B2 net aggregate score  
= English Language (EL)  
+ 2 Relevant Subjects (R1, R2)  
+ 2 Best Subjects (B1, B2)

- CCA bonus points



 Nanyang Polytechnic

 Ngee Ann Polytechnic

 Republic Polytechnic

 Singapore Polytechnic

 Temasek Polytechnic  
*bringing education to life and life to education*

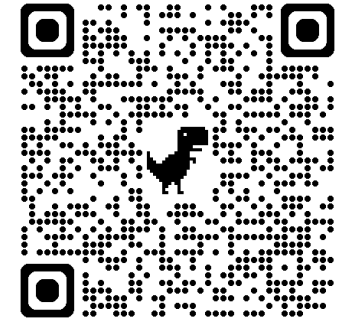
# POLYTECHNICS

## 2 Specific Subject Entry Requirements

Aggregate Type		ELR2B2 – A	ELR2B2 – B	ELR2B2 – C	ELR2B2 – D
		<i>Humanities Media &amp; Design</i>	<i>Business &amp; Management</i>	<i>Applied Sciences Engineering Health Sciences Info &amp; Digital Tech</i>	<i>Built Environment Media &amp; Design</i>
EL		English			
R2	1 <sup>st</sup> Group of Relevant Subjects *	Art Humanities subjects Music	Elementary Mathematics or Additional Mathematics		
	2 <sup>nd</sup> Group of Relevant Subjects*	Additional Mathematics Art Chinese Humanities subjects Music POA	Art Humanities subjects Music POA	Science subjects Design & Technology Nutrition Food Science	Art Science subjects Design & technology Nutrition Food Science
B2		Best 2 other subjects			

\* Some common subjects; list non exhaustive

# 2026 JAE – POLY COP



2026 JAE Course Booklet

Source: <https://sgschoolkaki.com/polytechnics/cop-2026>

# JC VS POLY

## JC/MI

In-depth study of a few subjects

Theory-based learning

One major exam

Structured timetable

## POLYTECHNIC

More bite-sized modules

Practice-oriented and applied learning

Cumulative GPA

Flexible timetable

It is easier to get into university with an A-level certificate than with a poly diploma.

TRUE

FALSE

Join at  
mentimeter.com  
Code: 3613 9470



# INDICATIVE GRADE PROFILES (NUS)

Using A-level results (3H2/1H1)

NUS Programmes	Representative Grade Profile: 3H2/1H1	
	10th percentile	90th percentile
<b>Faculty of Law</b>		
Law*	AAA/A	AAA/A
<b>School of Medicine</b>		
Medicine*	AAA/A	AAA/A
Nursing*	CCD/C	ABB/B
<b>Faculty of Dentistry</b>		
Dentistry*	AAA/A	AAA/A
<b>College of Design &amp; Engineering</b>		
Architecture*	CCC/C	AAB/B
Engineering	BBB/C	AAA/A
Industrial Design*	BBC/B	AAA/A
Landscape Architecture*	CCC/B	AAB/C

# INDICATIVE GRADE PROFILES (NUS)

Using Polytechnic GPA

NUS Programmes	Representative Grade Profile: Polytechnic GPA	
	10th percentile	90th percentile
<b>Faculty of Law</b>		
Law*	#	#
<b>School of Medicine</b>		
Medicine*	3.87	3.99
Nursing*	3.18	3.77
<b>Faculty of Dentistry</b>		
Dentistry*	#	#
<b>College of Design &amp; Engineering</b>		
Architecture*	3.27	3.88
Engineering	3.57	3.94
Industrial Design*	3.56	3.90
Landscape Architecture*	3.37	3.81

# INDICATIVE GRADE PROFILES (NTU)

Using A-level results (3H2/1H1)

NTU Programmes	Representative Grade Profile 3H2/1H1	
	10 <sup>th</sup> percentile	90 <sup>th</sup> percentile
<b>Nanyang Business School (College of Business)</b>		
Accountancy*	ABC/C	AAA/A
Business*	ABC/C	AAA/A
Applied Computing in Finance*	AAC/B	AAA/A
<b>College of Humanities, Arts &amp; Social Sciences</b>		
SOH Double Major Programmes*	AAA/C	AAA/A
SSS Double Major Programmes	AAA/B	AAA/A
Art, Design & Media*^	BCC/C	AAA/A
Chinese*	BBC/C	AAA/A
Communication Studies*	AAC/C	AAA/A
Economics	BBC/B	AAA/A
Economics and Data Science	AAB/B	AAA/A

# INDICATIVE GRADE PROFILES (NTU)

Using Polytechnic GPA

NTU Programmes	Representative Grade Profile Polytechnic GPAs	
	10 <sup>th</sup> percentile	90 <sup>th</sup> percentile
<b>College of Humanities, Arts &amp; Social Sciences</b>		
SOH Double Major Programmes*	3.57	3.86
SSS Double Major Programmes	#	#
Art, Design & Media*^	3.43	3.90
Chinese*	3.38	3.70
Communication Studies*	3.70	3.91
Economics	3.55	3.79
Economics and Data Science	#	#
<b>Nanyang Business School (College of Business)</b>		
Accountancy*	3.62	3.96
Business*	3.66	3.95
Applied Computing in Finance*	3.81	3.99

# POLY-UNIVERSITY PATHWAYS

University Pathway Programmes at Polytechnics offer the chance to study University-level modules in the final year at the polytechnic, and to apply for credit transfers, reducing overall time needed to complete your degree.

Examples (non-exhaustive list):

- SP-NTU University Accelerated Pathway Programmes ([UAPP](#))
  - [Diploma in Accountancy](#)
  - [Diploma in Banking and Finance](#)
  - [Diploma in Business Administration](#)
  - [Diploma in Human Resource Management with Psychology](#)

# OVERSEAS INTERNSHIPS

Example from NYP:



# FINDING THE RIGHT FIT

Not about which pathway is better  
Consider what is right for you (your  
child)



# APTITUDE-BASED ADMISSIONS

## DSA-JC / POLY EAE



- Students to apply for admission prior to taking their O-Level exam
- Students are selected based on their aptitude and interest, apart from academic grades
- Students receive conditional offers for admission prior to receiving their O-Level grades

# APPLICATIONS TIMELINE

During Sec 4 year  
(May – Aug)

Joint Admissions  
Exercise  
After O-level results  
(January)

Polytechnic

JC / MI

Arts  
Institutions

Aptitude-Based  
Admissions  
(ABA)

Poly EAE

JC DSA

AI EAE

# THINGS TO NOTE

- You can apply to both DSA-JC and Poly EAE  
    **BUT** only allowed to accept ONE offer
- Once you accept the offer, you cannot participate in the JAE (after release of O-level results) **OR** transfer to another school
- DSA – Direct application to JCs
- Poly – Centralised application portal (3 choices)





## SHOULD YOU APPLY?

- Do I have a genuine interest/ passion in a particular course?
- Can I show evidence of my aptitude for this course?
- What are my long-term career goals? Will this course help me to achieve them?

Should be more than just a backup plan

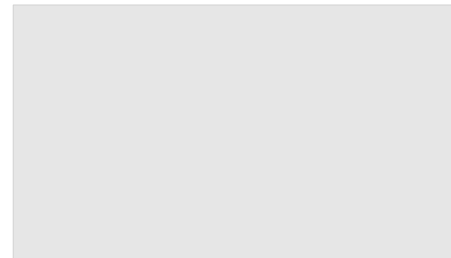
# COMPETITIVE PROCESS

## Poly EAE (*National statistics*)

- About **20% of intake** accepted via EAE (JAE still the predominant mode of entry)
- Course-level allowance for EAE: **30% - 50%** (e.g. Early Childhood, Social Work, Design)
- About **42%** who applied for Poly EAE received an offer

## DSA-JC

- Usually only a few places per talent area
- Many different CCAs and roles



**Weigh chances of success against opportunity cost**

# SUPPORT FOR OUR STUDENTS

- Poly EAE Workshop
- 1-1 or small group counselling

Encourage your children to make an appointment with me if they need guidance.

Mondays & Tuesdays

8am - 5pm ASE Room

Chat with your ECG counsellor!

What subject combination should I take?

Should I go to a JC or Poly?

I don't know what I want to do, but I love Literature and Music. What next?

What career should I pursue in the future?

How do I apply for DSA and EAE?

If you have questions like these, why not make an appointment to see me?  
You can also drop by during your breaks or after school.  
Come individually or with a couple of friends...  
don't be shy! 😊

Ms Christina  
ECG Counsellor | Gan Eng Seng School

Booking link:  
<https://go.gov.sg/book-ecg-gess>

Email me at:  
ho\_yuin\_ching\_christina@ecg.edu.sg



SUPPORTING YOUR  
CHILD'S ECG  
JOURNEY

# FUTURE DISRUPTIONS

20.6% of Singapore's workforce  
could be displaced by 2028  
due to Artificial Intelligence

Technology and the future of ASEAN jobs



## Technology and the future of ASEAN jobs

The impact of AI on workers in  
ASEAN's six largest economies

September 2018





1.7 million  
More workers  
will need  
**Foundational**  
skills

250,000  
More workers  
will need  
**Cognitive**  
skills

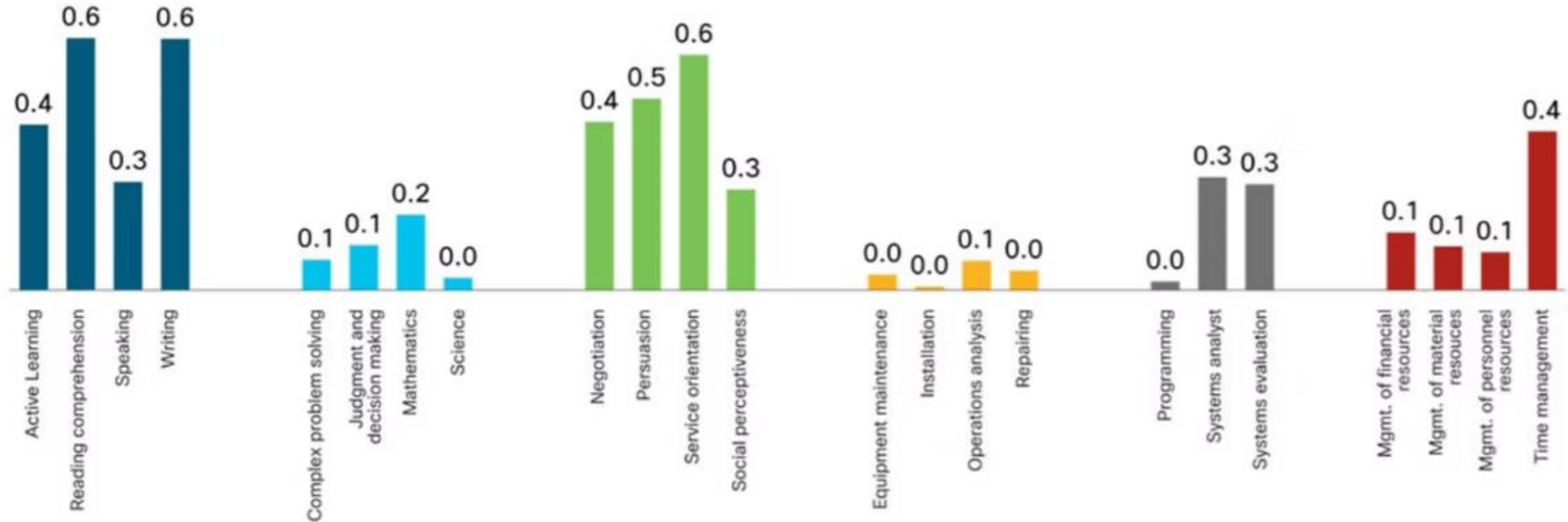
1.9 million  
More workers  
will need  
**Interactive**  
skills

-750,000  
Fewer workers  
will need  
**Operations**  
skills

800,000  
More workers  
will need  
**IT**  
skills

1.0 million  
More workers  
will need  
**Management**  
skills

Change in skills points per worker





Where Do I  
Want To Go?  
**Exploring  
Opportunities**

Who Am I?  
**Discovering  
Purpose**

How Do I Get There?  
**Staying  
Relevant**

# ECG FRAMEWORK

PURPOSEFUL LIVING

STUDENT AGENCY

CHANGE READINESS



Long term  
Strategic  
Transcends Self

Short term  
Reactive  
Focuses on Self

# Purpose vs Goals

# DISCOVERING PURPOSE

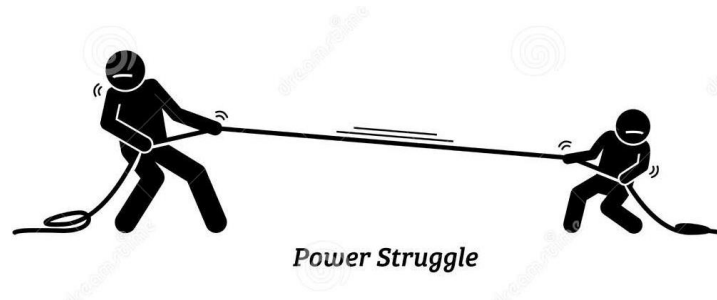


- Not usually discovered in one moment.
- Step by step:
  1. Notice what matters to you,
  2. Be brave enough to explore it,
  3. Work hard to grow in it.

# DEVELOPING AGENCY



What we want



What sometimes happens

Giving them SPACE to learn to make decisions



WOMEN

## 'I don't let my background stop me': This nurse-turned-hospital CEO wants to lead with an open mind

A nurse by training, Alexandra Hospital CEO Margaret Lee welcomes artificial intelligence, embraces new ways of working – even when it means making mistakes – and sees staff differences as a strength in tackling Singapore's healthcare issues.



Izza Haziqah Abdul Rahman

01 Jan 2026 07:46AM

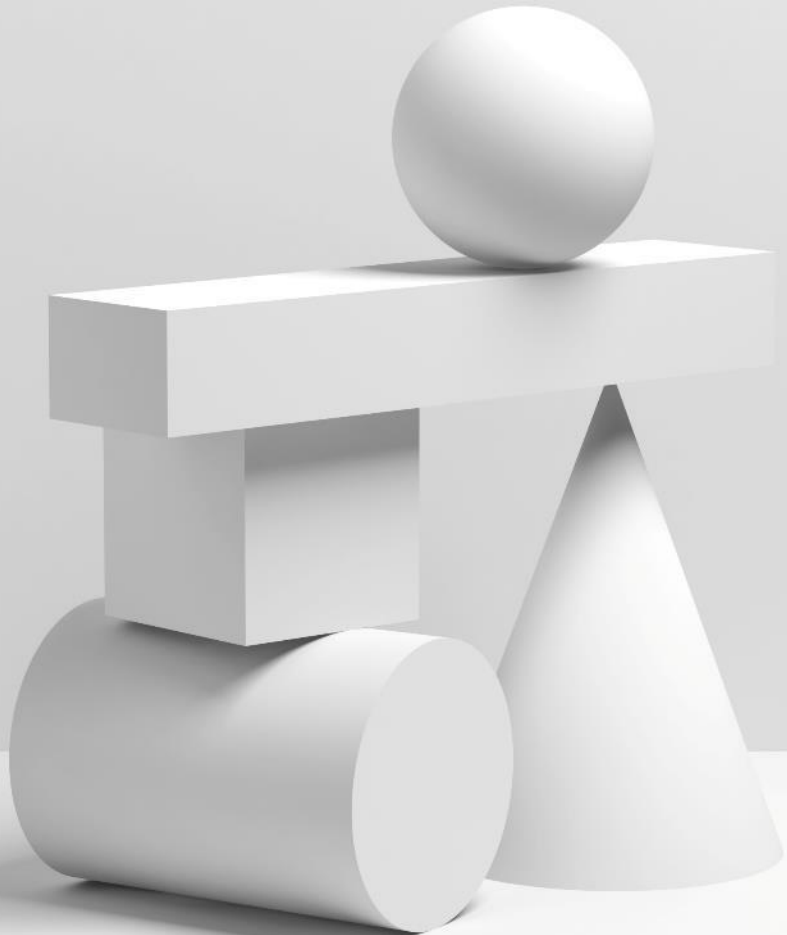


After serving as Alexandra Hospital's chief nurse for six years and its deputy chief executive officer for a year, Margaret Lee is now its new chief executive officer, from Jan 1, 2026. (Photo: CNA/Izza Haziqah)

# HAVING THE RIGHT **MINDSET**

"Nurses weren't always exposed to the management aspects of work if we were purely providing direct care, but I had to do all of these – even when I didn't feel sure."

Margaret Lee



Q & A

If time permits



- We would appreciate if you can take a few minutes to provide us with some feedback for this session. Thank you!

# Feedback Form

